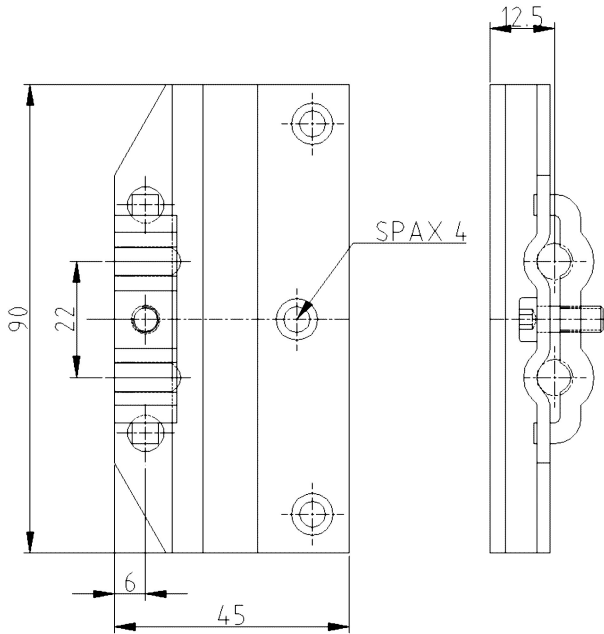


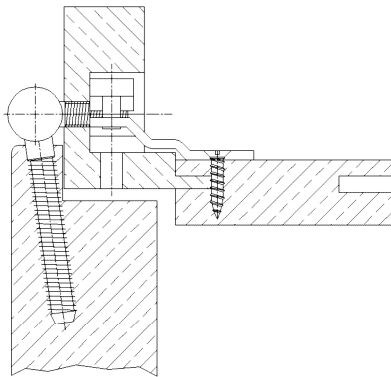
Steel Receiver ST100



Additional Information

Standard load: Maximum door weight 60 kg (per pair)
 Application: Wood frames, closed frames, small mounting depth
 Combination: COMBICA® frame parts 1534, 1544, 2641, 2941

Section Drawing



Item	Finish	PU Bemerkung
022996	without finish	150 Stahltasche ST100/12,5